



# ACL

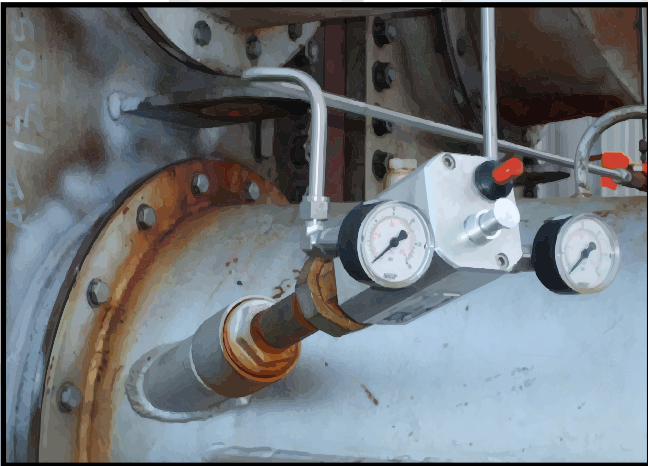
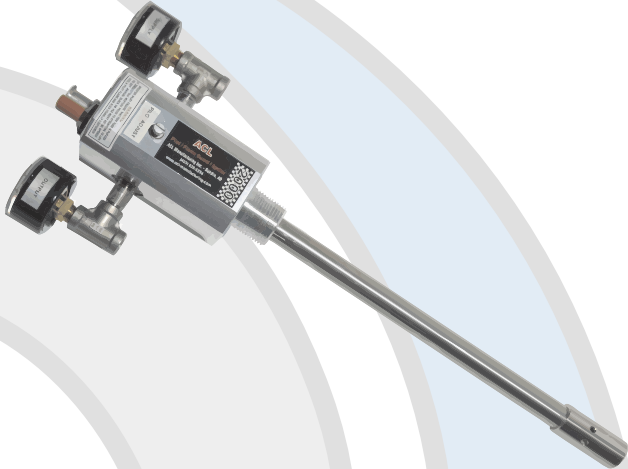
Manufacturing

A Division of ClearRushCo.

# Pneumatic Flame Fail Ignition System

## Model: ACL 2000

The **ACL 2000 Flame Fail Ignition System** provides pilot ignition and flame fail protection without the requirement of electricity. Its thermocouple and Baso gas valve meet the requirements for flame fail monitoring of burners delivering less than 400,000 BTU/hour.



### Features

Provide safe and reliable pilot ignition/flame sensing for industrial heating applications requiring up to 400,000 BTU/hr

Innovative, compact design

Economically priced

No electricity required

Self-powered operation

CSA approved gas valve

Alarm control capabilities

Easy to install

Pilot Ignitor Tube lengths from 12" to 72"

[www.clearrushco.com](http://www.clearrushco.com)

1-877-638-5234 (403) 638-5234

Clear Rush Co.  
Box 1898, 5406 Township Road 325B  
Sundre, AB T0M 1X0  
Canada

